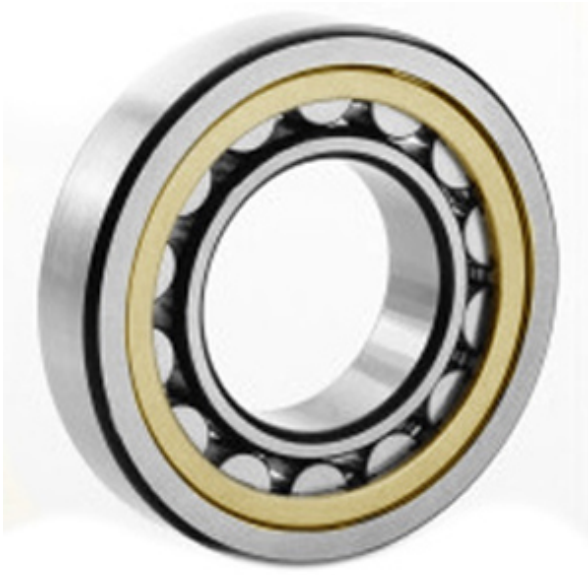




# Jining Jinjia Hydraulic Co., Ltd.



20210-KM Bearing 2D drawings and 3D CAD models

1.969 Inch | 50 Millimeter x 3.543 Inch | 90  
 Millimeter x 0.787 Inch | 20 Millimeter  
**CONSOLIDATED BEARING 20210-KM**  
 Spherical Roller Bearings

Bearing No. 20210-KM

Category	Spherical Roller Bearings
Inventory	0.0
Manufacturer Name	CONSOLIDATED BEARING
Minimum Buy Quantity	N/A
Weight	0.552
EAN	0644075156035
Product Group	B04311
Internal Clearance	C0-Medium
Mounting Method	Adapter Mount
Rolling Element	Spherical Roller Bearing
Bore Profile	Tapered
Cage Material	Bronze
Enclosure	Open
Number of Rows of Rollers	Single Row
Relubricatable	No
Inch - Metric	Metric
Long Description	50MM Tapered Bore; 90MM Outside Diameter; 20MM Width; C0-Medium Clearance; Adapter Mount; Single Row of Spherical Roller Bearings; Bronze Cage Material; Open Enclosure; Not Relubricatable; Adapter Par
Other Features	Order adapter or



## Jining Jinjia Hydraulic Co., Ltd.

	withdrawal sleeve or nut separately. Others may be available
Category	Spherical Roller Bearing
UNSPSC	31171510
Harmonized Tariff Code	84823040
Noun	Bearing
Keyword String	Spherical
Manufacturer URL	<a href="http://www.consbrgs.com/">http://www.consbrgs.com/</a>
Weight / LBS	1.217
B	0.787 Inch   20 Millimeter
D	3.543 Inch   90 Millimeter
Adapter Part Number	H210 (Specify bore) Inch   H210 (Specify bore) Millimeter
d	1.969 Inch   50 Millimeter