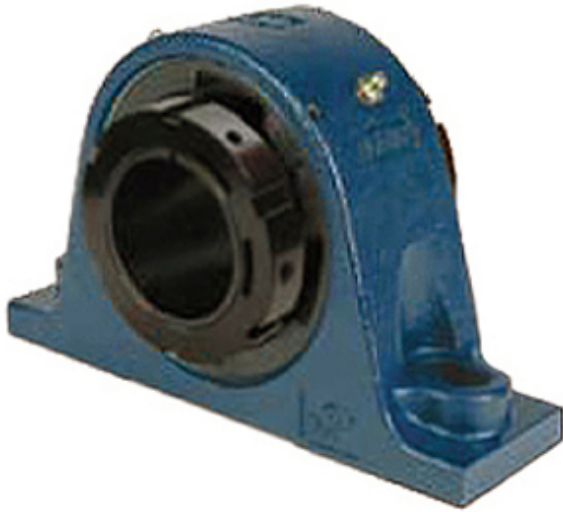




Jining Jinjia Hydraulic Co., Ltd.



3 Inch | 76.2 Millimeter x 3.62 Inch | 91.948
Millimeter x 3.125 Inch | 79.38 Millimeter QM
INDUSTRIES QAP15A300SET Pillow Block
Bearings

Bearing No. QAP15A300SET

QAP15A300SET Bearing 2D drawings and 3D CAD
models

Category	Pillow Block Bearings
Inventory	0.0
Manufacturer Name	TIMKEN
Minimum Buy Quantity	N/A
Weight	10.442
EAN	0883450045261
Product Group	M06288
Number of Mounting Holes	2
Mounting Method	Concentric Collar
Housing Style	2 Bolt Pillow Block
Rolling Element	Spherical Roller Bearing
Housing Material	Cast Steel
Expansion / Non-expansion	Expansion
Mounting Bolts	3/4 Inch
Relubricatable	Yes
Insert Part Number	22215
Seals	Teflon Labyrinth
Housing Configuration	1 Piece Solid
Inch - Metric	Inch
Other Features	Double Row Single Collar With Set Screw
Long Description	2 Bolt Pillow Block; 3" Bore; 3-1/8" Base to Center Height; Concentric Collar Mount; Spherical Roller



Jining Jinjia Hydraulic Co., Ltd.

	Bearing; 7-7/8" Minimum Bolt Spacing; 9-5/8" Bolt Spacing Maximum; Relubricata
Category	Pillow Block
UNSPSC	31171511
Harmonized Tariff Code	8483.20.40.80
Noun	Bearing
Keyword String	Pillow Block
Manufacturer URL	http://www.qmbearings.com
Manufacturer Item Number	QAP15A300SET
Weight / LBS	28
Bolt Spacing Maximum	9.625 Inch 244.475Millimeter
D	3.62 Inch 91.948 Millimeter
d	3 Inch 76.2 Millimeter
Bolt Spacing Minimum	7.875 Inch 200.025Millimeter
B	3.125 Inch 79.38 Millimeter
Actual Bolt Center to Center	0 Inch 0Millimeter
Nominal Bolt Center to Center	8.8 Inch 223 Millimeter