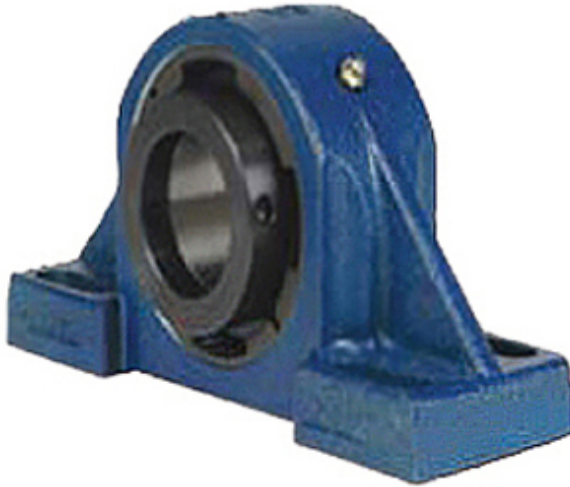




Jining Jinjia Hydraulic Co., Ltd.



2.438 Inch | 61.925 Millimeter x 2.87 Inch |
 72.898 Millimeter x 3.25 Inch | 82.55 Millimeter
 QM INDUSTRIES TAPH15K207ST Pillow Block
 Bearings

Bearing No. TAPH15K207ST

TAPH15K207ST Bearing 2D drawings and 3D CAD
 models

Category	Pillow Block Bearings
Inventory	0.0
Manufacturer Name	TIMKEN
Minimum Buy Quantity	N/A
Weight	10.896
EAN	0883450129152
Product Group	M06288
Number of Mounting Holes	4
Mounting Method	Tapered Adapter Sleeve
Housing Style	4 Bolt Pillow Block
Rolling Element	Spherical Roller Bearing
Housing Material	Cast Steel
Expansion / Non-expansion	Non-expansion
Mounting Bolts	1/2 Inch
Relubricatable	Yes
Insert Part Number	22215
Seals	Teflon Labyrinth
Housing Configuration	1 Piece Solid
Inch - Metric	Inch
Other Features	Double Row Extreme Duty SAF Style
Long Description	4 Bolt Pillow Block; 2-7/16" Bore; 3-1/4" Base to Center Height; Tapered Adapter Sleeve Mount; Spherical



Jining Jinjia Hydraulic Co., Ltd.

	Roller Bearing; 7.94" Minimum Bolt Spacing; 9.69" Bolt Spacing Maximum; Rel
Category	Pillow Block
UNSPSC	31171511
Harmonized Tariff Code	8483.20.40.80
Noun	Bearing
Keyword String	Pillow Block
Manufacturer URL	http://www.qmbearings.com
Manufacturer Item Number	TAPH15K207ST
Weight / LBS	29
D	2.87 Inch 72.898 Millimeter
Nominal Bolt Center to Center	8.8 Inch 223 Millimeter
Bolt Spacing Minimum	7.94 Inch 201.676Millimeter
Bolt Spacing Maximum	9.69 Inch 246.126Millimeter
B	3.25 Inch 82.55 Millimeter
d	2.438 Inch 61.925 Millimeter
Actual Bolt Center to Center	0 Inch 0Millimeter