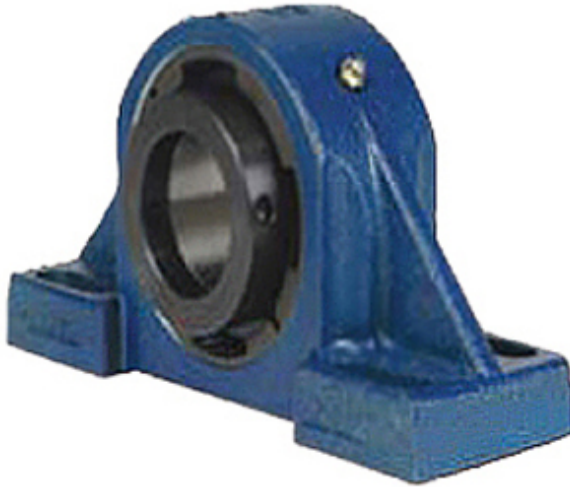




Jining Jinjia Hydraulic Co., Ltd.



QAAPF22A408SEC Bearing 2D drawings and 3D CAD models

4.5 Inch | 114.3 Millimeter x 6.25 Inch | 158.75 Millimeter x 4.75 Inch | 120.65 Millimeter QM INDUSTRIES QAAPF22A408SEC Pillow Block Bearings

Bearing No. QAAPF22A408SEC

Category	Pillow Block Bearings
Inventory	0.0
Manufacturer Name	TIMKEN
Minimum Buy Quantity	N/A
Weight	32.688
EAN	0883450299558
Product Group	M06288
Number of Mounting Holes	4
Mounting Method	Concentric Collar
Housing Style	4 Bolt Pillow Block
Rolling Element	Spherical Roller Bearing
Housing Material	Cast Steel
Expansion / Non-expansion	Expansion
Mounting Bolts	3/4 Inch
Relubricatable	Yes
Insert Part Number	22222
Seals	Double Lip Viton
Housing Configuration	1 Piece Solid
Inch - Metric	Inch
Other Features	Double Row Double Collar With Set Screw
Long Description	4 Bolt Pillow Block; 4-1/2" Bore; 4-3/4" Base to Center Height; Concentric Collar Mount; Spherical Roller



Jining Jinjia Hydraulic Co., Ltd.

	Bearing; 11-7/8" Minimum Bolt Spacing; 14-1/2" Bolt Spacing Maximum; Relub
Category	Pillow Block
UNSPSC	31171511
Harmonized Tariff Code	8483.20.40.80
Noun	Bearing
Keyword String	Pillow Block
Manufacturer URL	http://www.qmbearings.com
Weight / LBS	82
Bolt Spacing Minimum	11.875 Inch 301.625Millimeter
B	4.75 Inch 120.65 Millimeter
Nominal Bolt Center to Center	13.2 Inch 335.3 Millimeter
D	6.25 Inch 158.75 Millimeter
d	4.5 Inch 114.3 Millimeter
Actual Bolt Center to Center	0 Inch 0Millimeter
Bolt Spacing Maximum	14.5 Inch 368.3Millimeter