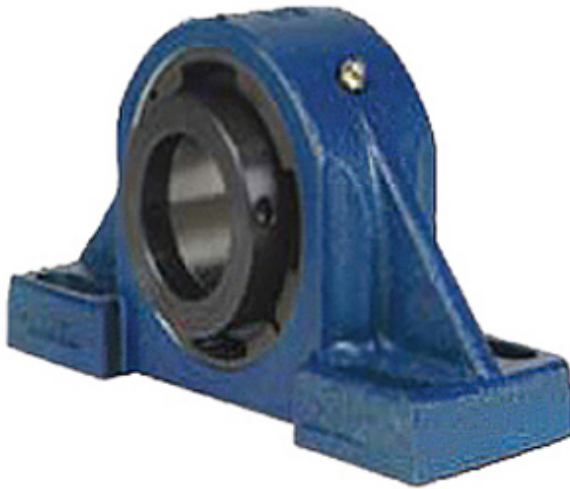




## Jining Jinjia Hydraulic Co., Ltd.



QAPF18A085SET Bearing 2D drawings and 3D CAD models

3.346 Inch | 85 Millimeter x 4.03 Inch | 102.362 Millimeter x 3.74 Inch | 95 Millimeter QM INDUSTRIES QAPF18A085SET Pillow Block Bearings

Bearing No. QAPF18A085SET

|                           |   |
|---------------------------|---|
| Category                  | Pillow Block Bearings   |
| Inventory                 | 0.0   |
| Manufacturer Name         | TIMKEN  |
| Minimum Buy Quantity      | N/A   |
| Weight                    | 19.522  |
| EAN                       | 0883450331999   |
| Product Group             | M06288  |
| Number of Mounting Holes  | 4   |
| Mounting Method           | Concentric Collar   |
| Housing Style             | 4 Bolt Pillow Block   |
| Rolling Element           | Spherical Roller Bearing  |
| Housing Material          | Cast Steel  |
| Expansion / Non-expansion | Expansion   |
| Mounting Bolts            | 3/4 Inch  |
| Relubricatable            | Yes   |
| Insert Part Number        | 22218   |
| Seals                     | Teflon Labyrinth  |
| Housing Configuration     | 1 Piece Solid   |
| Inch - Metric             | Metric  |
| Other Features            | Double Row   Single Collar   With Set Screw   |
| Long Description          | 4 Bolt Pillow Block; 85MM Bore; 95MM Base to Center Height; Concentric Collar Mount; Spherical Roller |



## Jining Jinjia Hydraulic Co., Ltd.

|                                  |  |
|----------------------------------|--|
|                                  | Bearing; 225.425MM<br>Minimum Bolt Spacing;<br>276.225MM Bolt Spacing<br>Maximum; Relubricatable;<br>Cast Stee |
| Category                         | Pillow Block   |
| UNSPSC                           | 31171511   |
| Harmonized Tariff Code           | 8483.20.40.80  |
| Noun                             | Bearing  |
| Keyword String                   | Pillow Block   |
| Manufacturer URL                 | <a href="http://www.qmbearings.com">http://www.qmbearings.com</a>  |
| Weight / LBS                     | 49   |
| D                                | 4.03 Inch   102.362<br>Millimeter  |
| Actual Bolt Center to<br>Center  | 0 Inch   0Millimeter   |
| Bolt Spacing Minimum             | 8.875 Inch  <br>225.425Millimeter  |
| B                                | 3.74 Inch   95 Millimeter  |
| Nominal Bolt Center to<br>Center | 9.9 Inch   251.5 Millimeter  |
| Bolt Spacing Maximum             | 10.875 Inch  <br>276.225Millimeter   |
| d                                | 3.346 Inch   85 Millimeter   |