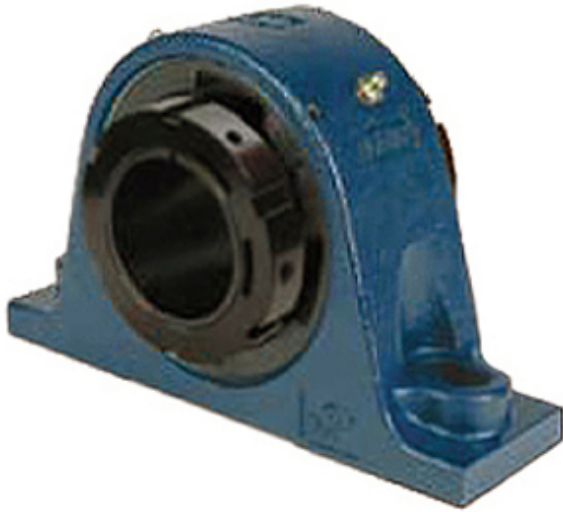




## Jining Jinjia Hydraulic Co., Ltd.



QAASN15A215SEC Bearing 2D drawings and 3D CAD models

2.938 Inch | 74.625 Millimeter x 4.724 Inch | 120 Millimeter x 3.75 Inch | 95.25 Millimeter QM INDUSTRIES QAASN15A215SEC Pillow Block Bearings

Bearing No. QAASN15A215SEC

Category	Pillow Block Bearings
Inventory	0.0
Manufacturer Name	TIMKEN
Minimum Buy Quantity	N/A
Weight	14.528
EAN	0883450350099
Product Group	M06288
Number of Mounting Holes	2
Mounting Method	Concentric Collar
Housing Style	2 Bolt Pillow Block
Rolling Element	Spherical Roller Bearing
Housing Material	Cast Steel
Expansion / Non-expansion	Expansion
Mounting Bolts	20 Millimeter
Relubricatable	Yes
Insert Part Number	22215
Seals	Double Lip Viton
Housing Configuration	1 Piece Solid
Inch - Metric	Inch
Other Features	Double Row   Double Collar   SN Style   With Set Screw
Long Description	2 Bolt Pillow Block; 2-15/16" Bore; 3-3/4" Base to Center Height;



## Jining Jinjia Hydraulic Co., Ltd.

	Concentric Collar Mount; Spherical Roller Bearing; 9.488" Minimum Bolt Spacing; 10-63/64" Bolt Spacing Maximum; Re
Category	Pillow Block
UNSPSC	31171511
Harmonized Tariff Code	8483.20.40.80
Noun	Bearing
Keyword String	Pillow Block
Manufacturer URL	<a href="http://www.qmbearings.com">http://www.qmbearings.com</a>
Weight / LBS	46
Bolt Spacing Minimum	9.488 Inch   241Millimeter
D	4.724 Inch   120 Millimeter
B	3.75 Inch   95.25 Millimeter
Bolt Spacing Maximum	10.984 Inch   279Millimeter
Actual Bolt Center to Center	0 Inch   0Millimeter
Nominal Bolt Center to Center	10.4 Inch   264.2 Millimeter
d	2.938 Inch   74.625 Millimeter