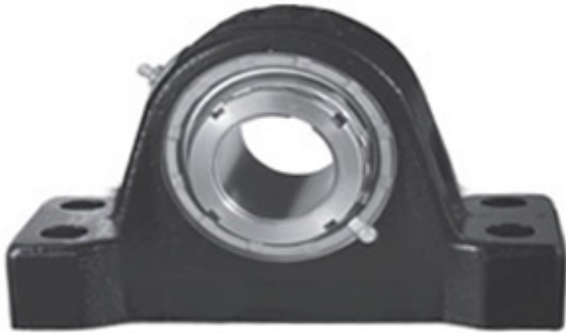




Jining Jinjia Hydraulic Co., Ltd.

3.938 Inch | 100.025 Millimeter x 5.281 Inch |
 134.137 Millimeter x 5.75 Inch | 146.05 Millimeter
 REXNORD MP9315YF Pillow Block Bearings



MP9315YF Bearing 2D drawings and 3D CAD models

Bearing No. MP9315YF

Category	Pillow Block Bearings
Inventory	0.0
Manufacturer Name	REXNORD
Minimum Buy Quantity	N/A
Weight	49.032
EAN	0698210712402
Product Group	M06288
Number of Mounting Holes	4
Mounting Method	Tapered Adapter Sleeve
Housing Style	4 Bolt Pillow Block
Rolling Element	Spherical Roller Bearing
Housing Material	Cast Iron
Expansion / Non-expansion	Non-expansion
Mounting Bolts	1 Inch
Relubricatable	Yes
Insert Part Number	9315YU
Seals	Heavy Contact
Housing Configuration	1 Piece Solid
Inch - Metric	Inch
Other Features	Double Row Extra Heavy Duty Redesigned Shaft Size
Long Description	4 Bolt Pillow Block; 3-15/16" Bore; 5-3/4" Base to Center Height; Tapered Adapter Sleeve Mount; Spherical Roller Bearing;



Jining Jinjia Hydraulic Co., Ltd.

	Relubricatable; Cast Iron; Heavy Contact; Non- expansion
Category	Pillow Block
UNSPSC	31171511
Harmonized Tariff Code	8483.20.40.80
Noun	Bearing
Keyword String	Pillow Block
Manufacturer URL	http://www.rexnord.com
Manufacturer Item Number	MP9315YF
Manufacturer Internal Number	6871240
Weight / LBS	108
D	5.281 Inch 134.137 Millimeter
Nominal Bolt Center to Center	14.8 Inch 375 Millimeter
Bolt Spacing Minimum	0 Inch 0Millimeter
B	5.75 Inch 146.05 Millimeter
d	3.938 Inch 100.025 Millimeter
Actual Bolt Center to Center	14.8 Inch 375Millimeter
Bolt Spacing Maximum	0 Inch 0Millimeter