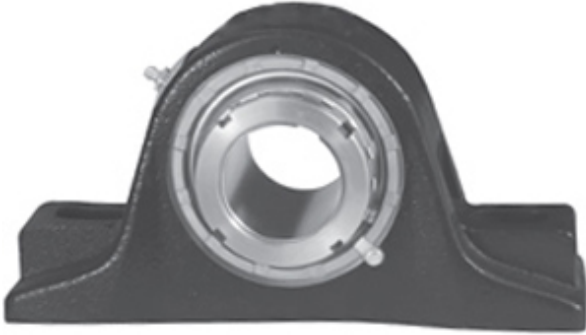




## Jining Jinjia Hydraulic Co., Ltd.

2.5 Inch | 63.5 Millimeter x 3.75 Inch | 95.25  
Millimeter x 3.5 Inch | 88.9 Millimeter REXNORD  
MPS9208 Pillow Block Bearings



MPS9208 Bearing 2D drawings and 3D CAD models

Bearing No. MPS9208

Category	Pillow Block Bearings
Inventory	0.0
Manufacturer Name	REXNORD
Minimum Buy Quantity	N/A
Weight	18.387
EAN	0698210712679
Product Group	M06288
Number of Mounting Holes	2
Mounting Method	Tapered Adapter Sleeve
Housing Style	2 Bolt Pillow Block
Rolling Element	Spherical Roller Bearing
Housing Material	Cast Iron
Expansion / Non-expansion	Expansion
Mounting Bolts	7/8 Inch
Relubricatable	Yes
Insert Part Number	9208U
Seals	Heavy Contact
Housing Configuration	1 Piece Solid
Inch - Metric	Inch
Other Features	Double Row   Extra Heavy Duty
Long Description	2 Bolt Pillow Block; 2-1/2" Bore; 3-1/2" Base to Center Height; Tapered Adapter Sleeve Mount; Spherical Roller Bearing;



## Jining Jinjia Hydraulic Co., Ltd.

	Relubricatable; Cast Iron; Heavy Contact; Expansion
Category	Pillow Block
UNSPSC	31171511
Harmonized Tariff Code	8483.20.40.80
Noun	Bearing
Keyword String	Pillow Block
Manufacturer URL	<a href="http://www.rexnord.com">http://www.rexnord.com</a>
Manufacturer Item Number	MPS9208
Manufacturer Internal Number	6871267
Weight / LBS	40.5
d	2.5 Inch   63.5 Millimeter
B	3.5 Inch   88.9 Millimeter
Nominal Bolt Center to Center	9.8 Inch   248.9 Millimeter
Bolt Spacing Maximum	0 Inch   0 Millimeter
Actual Bolt Center to Center	9.8 Inch   250 Millimeter
D	3.75 Inch   95.25 Millimeter
Bolt Spacing Minimum	0 Inch   0 Millimeter