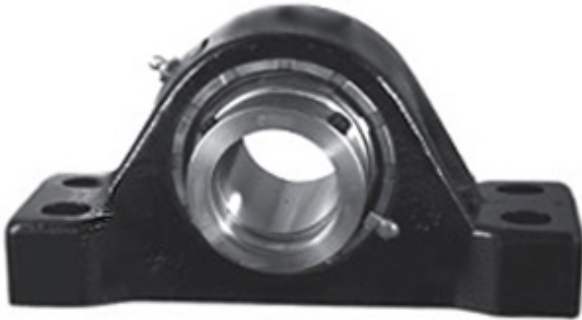




Jining Jinjia Hydraulic Co., Ltd.

2.938 Inch | 74.625 Millimeter x 4.531 Inch |
 115.09 Millimeter x 3.5 Inch | 88.9 Millimeter
 REXNORD MPS6215F Pillow Block Bearings



MPS6215F Bearing 2D drawings and 3D CAD models

Bearing No. MPS6215F

Category	Pillow Block Bearings
Inventory	0.0
Manufacturer Name	REXNORD
Minimum Buy Quantity	N/A
Weight	19.7
EAN	0793699906288
Product Group	M06288
Number of Mounting Holes	4
Mounting Method	Tapered Adapter Sleeve
Housing Style	4 Bolt Pillow Block
Rolling Element	Spherical Roller Bearing
Housing Material	Cast Iron
Expansion / Non-expansion	Expansion
Mounting Bolts	3/4 Inch
Relubricatable	Yes
Insert Part Number	6215U
Seals	Heavy Contact
Housing Configuration	1 Piece Solid
Inch - Metric	Inch
Other Features	Double Row
Long Description	4 Bolt Pillow Block; 2-15/16" Bore; 3-1/2" Base to Center Height; Tapered Adapter Sleeve Mount; Spherical Roller Bearing; Relubricatable; Cast Iron;



Jining Jinjia Hydraulic Co., Ltd.

	Heavy Contact; Expansion
Category	Pillow Block
UNSPSC	31171511
Harmonized Tariff Code	8483.20.40.80
Noun	Bearing
Keyword String	Pillow Block
Manufacturer URL	http://www.rexnord.com
Manufacturer Item Number	MPS6215F
Manufacturer Internal Number	190628
Weight / LBS	43.4
Bolt Spacing Maximum	0 Inch 0Millimeter
Nominal Bolt Center to Center	9.8 Inch 248.9 Millimeter
D	4.531 Inch 115.09 Millimeter
d	2.938 Inch 74.625 Millimeter
Bolt Spacing Minimum	0 Inch 0Millimeter
Actual Bolt Center to Center	9.8 Inch 250Millimeter
B	3.5 Inch 88.9 Millimeter