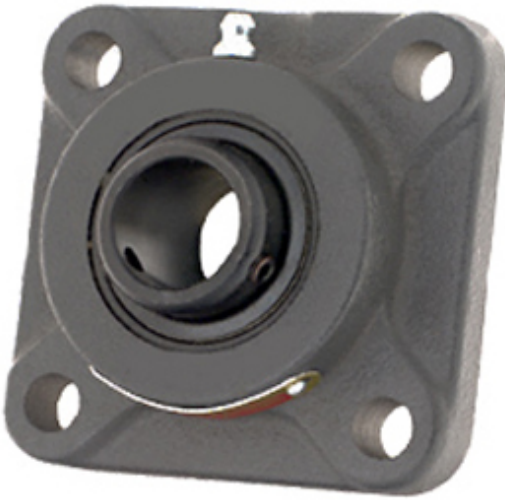




# Jining Jinjia Hydraulic Co., Ltd.



SF-39C CR Bearing 2D drawings and 3D CAD models

## SEALMASTER SF-39C CR Flange Block Bearings

Bearing No. SF-39C CR

Category	Flange Block Bearings
Inventory	0.0
Manufacturer Name	REGAL BELOIT
Minimum Buy Quantity	N/A
Weight	5.357
EAN	0662461238929
Product Group	M06110
Number of Mounting Holes	4
Mounting Method	Set Screw
Housing Style	4 Bolt Square Flange Block
Rolling Element	Ball Bearing
Housing Material	Cast Iron
Expansion / Non-expansion	Non-expansion
Mounting Bolts	21/32 Inch
Relubricatable	Yes
Insert Part Number	2-27C-CR
Seals	Single Lip Contact
Housing Configuration	1 Piece Solid
Pilot Configuration	No Pilot
Inch - Metric	Inch
Long Description	4 Bolt Square Flange Block; 2-7/16" Bore; 7.9" Bolt Circle; 5-5/8" Bolt Spacing; 1 Piece Solid; Set Screw Mount; Cast Iron; Ball Bearing; 2-9/16" Length Thru Bore; Relubricatable;



## Jining Jinjia Hydraulic Co., Ltd.

Other Features	Single Row   Standard Duty   Corrosion Resistant   Has Flinger
Category	Flange Block
UNSPSC	31171501
Harmonized Tariff Code	8483.20.40.40
Noun	Bearing
Keyword String	Flanged
Manufacturer URL	<a href="http://www.emerson-ept.com">http://www.emerson-ept.com</a>
Manufacturer Item Number	SF-39C CR
Manufacturer Internal Number	702583
Weight / LBS	11.8
Cartridge Pilot Diameter	0 Inch   0 Millimeter
d	2.438 Inch   61.925 Millimeter
Nominal Bolt Circle Diameter Round	7.9 Inch   200 Millimeter
Bolt Spacing	5.625 Inch   142.88 Millimeter
Cartridge Pilot Depth	0 Inch   0 Millimeter
D	2.563 Inch   65.09 Millimeter